

BID SHEET FOR CROPLAND FARM LEASE March 2023- February 2028

This Bid is for a five (5) year Crop Land and Farm Rent Lease (Haying/Pasture) for the following, Herington Regional Airport Lease 6 (L6) with 144.87 acres of cropland

\$ _____ per acre for cropland

Signature

Address

City/State/Zip

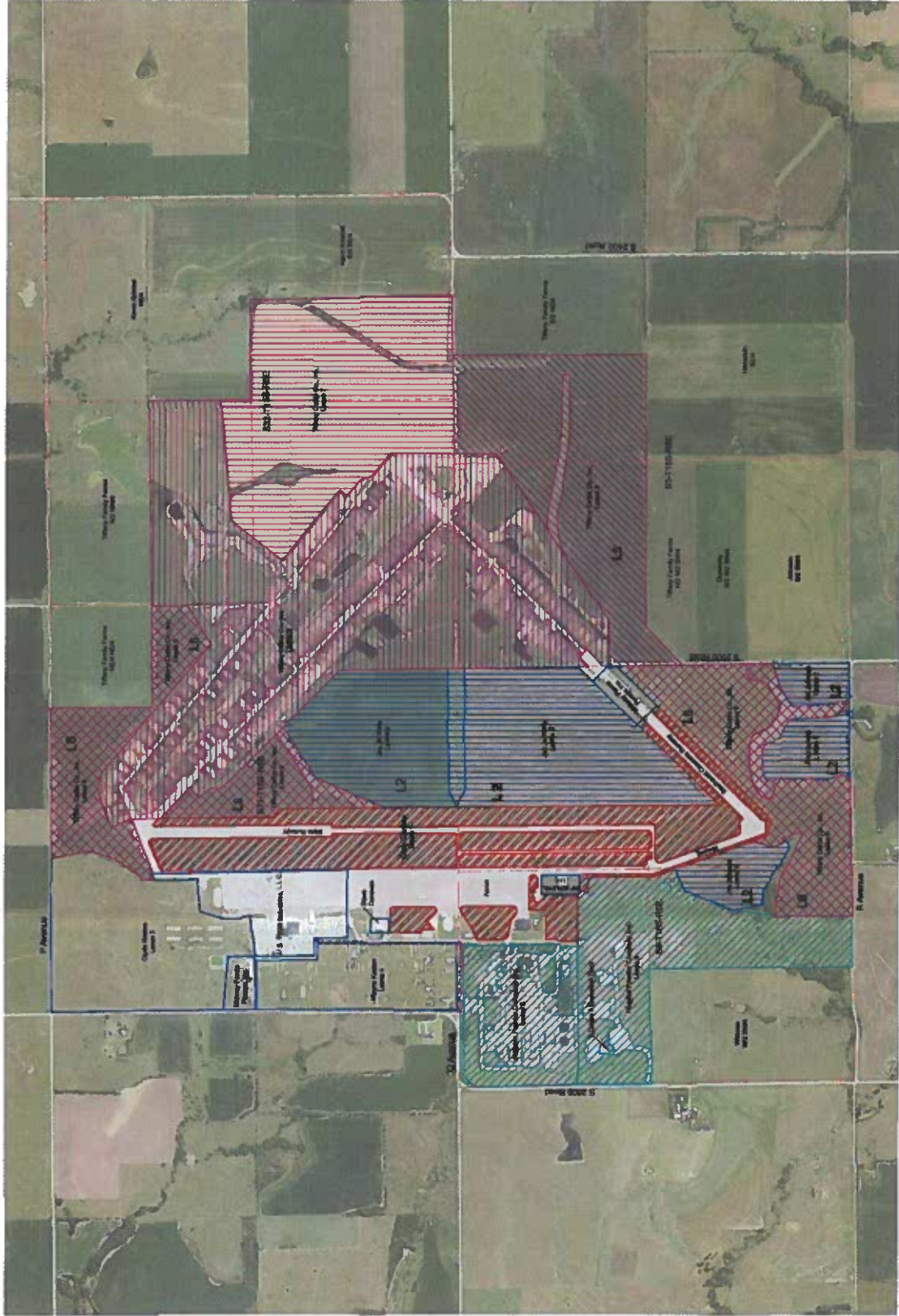
Telephone #

Cellular phone #

This Bid must be returned to the Herington City Office, 17 North Broadway/P O Box 31, Herington, KS 67449 for bid opening at 3:30 pm January 25, 2022.

LEASE EXHIBIT

at the Herrington Municipal Airport
 in Sections 31 and 32, Township 15 South, Range 6 East, Morris County, Kansas



LEGEND

| | |
|-----------------------------|------------------------------|
| [Red diagonal lines] | Lease L1 - Chick-Hickman |
| [Blue diagonal lines] | Lease L2 - JRM/James |
| [Green diagonal lines] | Lease L3 - Herrington, Inc. |
| [Yellow diagonal lines] | Lease L4 - Herrington, Inc. |
| [Purple diagonal lines] | Lease L5 - Herrington, Inc. |
| [Light blue diagonal lines] | Lease L6 - Herrington, Inc. |
| [White background] | Lease L7 - Herrington, Inc. |
| [Dark blue diagonal lines] | Lease L8 - Herrington, Inc. |
| [Dark green diagonal lines] | Lease L9 - Herrington, Inc. |
| [Dark red diagonal lines] | Lease L10 - Herrington, Inc. |

1. This map shows the proposed lease areas for the Herrington Municipal Airport in Sections 31 and 32, Township 15 South, Range 6 East, Morris County, Kansas. The map is based on the latest available aerial photography and ground survey data. The lease areas are shown in various colors and patterns as indicated in the legend.

2. The lease areas are subject to the terms and conditions of the lease agreements between the lessor and the lessee. The lessee is responsible for obtaining all necessary permits and approvals from the appropriate authorities before commencing any work on the lease area.

3. The lessee is also responsible for maintaining the lease area in good condition and for restoring the area to its original condition upon termination of the lease. The lessee shall also be responsible for any damages or liabilities incurred during the term of the lease.

4. This map is intended to provide a visual representation of the lease areas and is not to be construed as a guarantee of the accuracy of the information shown. The lessee shall verify the boundaries and contents of the lease area before commencing any work.

5. The map shows the location of the lease areas relative to the Herrington Municipal Airport. The airport is located in Sections 31 and 32, Township 15 South, Range 6 East, Morris County, Kansas.

6. The map also shows the location of the Herrington Municipal Airport Runway, Taxiway A, Taxiway B, Taxiway C, Taxiway D, Taxiway E, Taxiway F, Taxiway G, Taxiway H, Taxiway I, Taxiway J, Taxiway K, Taxiway L, Taxiway M, Taxiway N, Taxiway O, Taxiway P, Taxiway Q, Taxiway R, Taxiway S, Taxiway T, Taxiway U, Taxiway V, Taxiway W, Taxiway X, Taxiway Y, Taxiway Z, Taxiway AA, Taxiway AB, Taxiway AC, Taxiway AD, Taxiway AE, Taxiway AF, Taxiway AG, Taxiway AH, Taxiway AI, Taxiway AJ, Taxiway AK, Taxiway AL, Taxiway AM, Taxiway AN, Taxiway AO, Taxiway AP, Taxiway AQ, Taxiway AR, Taxiway AS, Taxiway AT, Taxiway AU, Taxiway AV, Taxiway AW, Taxiway AX, Taxiway AY, and Taxiway AZ.

7. The map also shows the location of the Herrington Municipal Airport Runway Extension, Taxiway AA, Taxiway AB, Taxiway AC, Taxiway AD, Taxiway AE, Taxiway AF, Taxiway AG, Taxiway AH, Taxiway AI, Taxiway AJ, Taxiway AK, Taxiway AL, Taxiway AM, Taxiway AN, Taxiway AO, Taxiway AP, Taxiway AQ, Taxiway AR, Taxiway AS, Taxiway AT, Taxiway AU, Taxiway AV, Taxiway AW, Taxiway AX, Taxiway AY, and Taxiway AZ.

8. The map also shows the location of the Herrington Municipal Airport Runway Extension, Taxiway AA, Taxiway AB, Taxiway AC, Taxiway AD, Taxiway AE, Taxiway AF, Taxiway AG, Taxiway AH, Taxiway AI, Taxiway AJ, Taxiway AK, Taxiway AL, Taxiway AM, Taxiway AN, Taxiway AO, Taxiway AP, Taxiway AQ, Taxiway AR, Taxiway AS, Taxiway AT, Taxiway AU, Taxiway AV, Taxiway AW, Taxiway AX, Taxiway AY, and Taxiway AZ.

9. The map also shows the location of the Herrington Municipal Airport Runway Extension, Taxiway AA, Taxiway AB, Taxiway AC, Taxiway AD, Taxiway AE, Taxiway AF, Taxiway AG, Taxiway AH, Taxiway AI, Taxiway AJ, Taxiway AK, Taxiway AL, Taxiway AM, Taxiway AN, Taxiway AO, Taxiway AP, Taxiway AQ, Taxiway AR, Taxiway AS, Taxiway AT, Taxiway AU, Taxiway AV, Taxiway AW, Taxiway AX, Taxiway AY, and Taxiway AZ.

10. The map also shows the location of the Herrington Municipal Airport Runway Extension, Taxiway AA, Taxiway AB, Taxiway AC, Taxiway AD, Taxiway AE, Taxiway AF, Taxiway AG, Taxiway AH, Taxiway AI, Taxiway AJ, Taxiway AK, Taxiway AL, Taxiway AM, Taxiway AN, Taxiway AO, Taxiway AP, Taxiway AQ, Taxiway AR, Taxiway AS, Taxiway AT, Taxiway AU, Taxiway AV, Taxiway AW, Taxiway AX, Taxiway AY, and Taxiway AZ.

PREPARED BY:
 Herrington Municipal Airport
 1000 1st Street, SE
 Morris, Kansas 66854
 Phone: 785.739.4444
 Fax: 785.739.4445