

# Herington Lakes Parks MP

---

*CITY OF HERINGTON, KANSAS*

MAY 2022



CONFLUENCE



## **MAYOR**

ERIC GARES

## **CITY MANAGER**

BRANDEN DROSS

## **CITY COMMISSION MEMBERS**

VANCE DONAHUE II

BEN CASTLEBERRY

ROBBIN BELL

DEBI URBANEK

## **STEERING COMMITTEE**

DEBI URBANEK

MARCUS HAWKES

BRAD HOMMAN

JEAN KREMIER

JANET WADE

BECCA EGGLESTON

TIM BETTLES

CHUCK SCOTT



## PLANNING TEAM

# CONFLUENCE

## LANDSCAPE ARCHITECTURE

PJ NOVICK - PRINCIPAL

HANK MOYERS - PROJECT MANAGER/ LANDSCAPE ARCHITECT

AVERY NICHOLS - LANDSCAPE ARCHITECT-IN-TRAINING

PADEN CHESNEY - LANDSCAPE ARCHITECT-IN-TRAINING



## Introduction

Herington Lakes has served the City of Herington's recreational, and infrastructure needs since the original lake was dammed in 1923. Since their inception, the lakes were utilized to serve as the City's water supply. Today the lakes serve the City's population of 2,147 residents in addition to tourists on a yearly basis that come to utilize the lakes amenities including RV camp sites, tent camping sites, beach areas, fishing docks and pavilions. Implementation of this Master Plan would be one of the most significant parks and recreation investments in the region. The facilities recommended for the two lakes will provide users with a broad range of activities for all ages and abilities. Improvements of both parks will not only provide residents access to recreational amenities currently unavailable to them, but also serve as a catalyst for drawing tourists to the area for camping, festivals, and recreational opportunities. The addition of these facilities will enhance the quality of life for residents and visitors for years to come.

## Purpose

For nearly 100 years, the 1,560 acres that comprise the Herington Lake Parks have served residents as a source of both household drinking water and recreation. Over the years, a variety of changes have impacted the lake function and character. Events that were once possible, including boat races are no longer possible due to the siltation of the lake. In addition, with the shallow water in the original lake, algae blooms in the heat of the summer are more common, limiting the ability to use the lake for recreational opportunities. Tourists and users today also expect quality amenities to draw people to these facilities. The lakes serve as a unique destination that can draw users throughout the region with updated facilities.

To continue the City of Herington's excellence in providing its residence with recreational opportunities and activities, the City commissioned the new Herington Lakes Park Master Plan in 2021. After issuing a Request for Proposals (RFP) and conducting interviews, Confluence was selected. The team was tasked with creating a vision for this facility that provides a wide range of recreation and activity spaces. The plan establishes a vision for the parks combining community input and desires with a holistic and environmentally responsible approach.



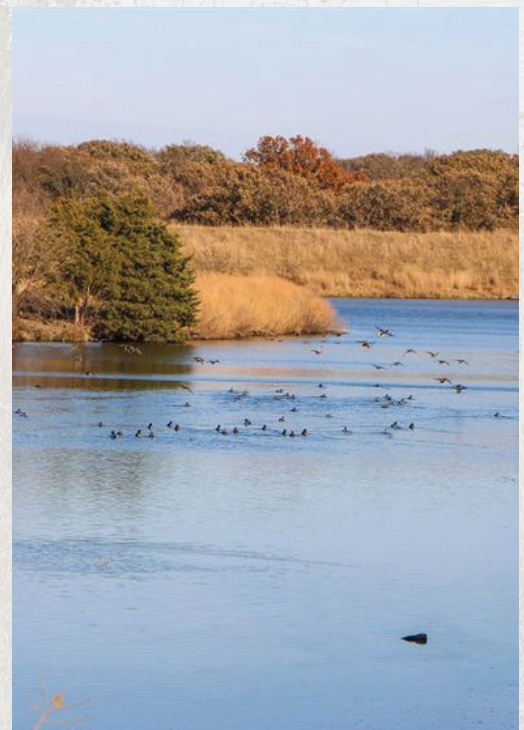
1929 SHELTER HOUSE - HERINGTON KS



MAIN STREET - HERINGTON KS

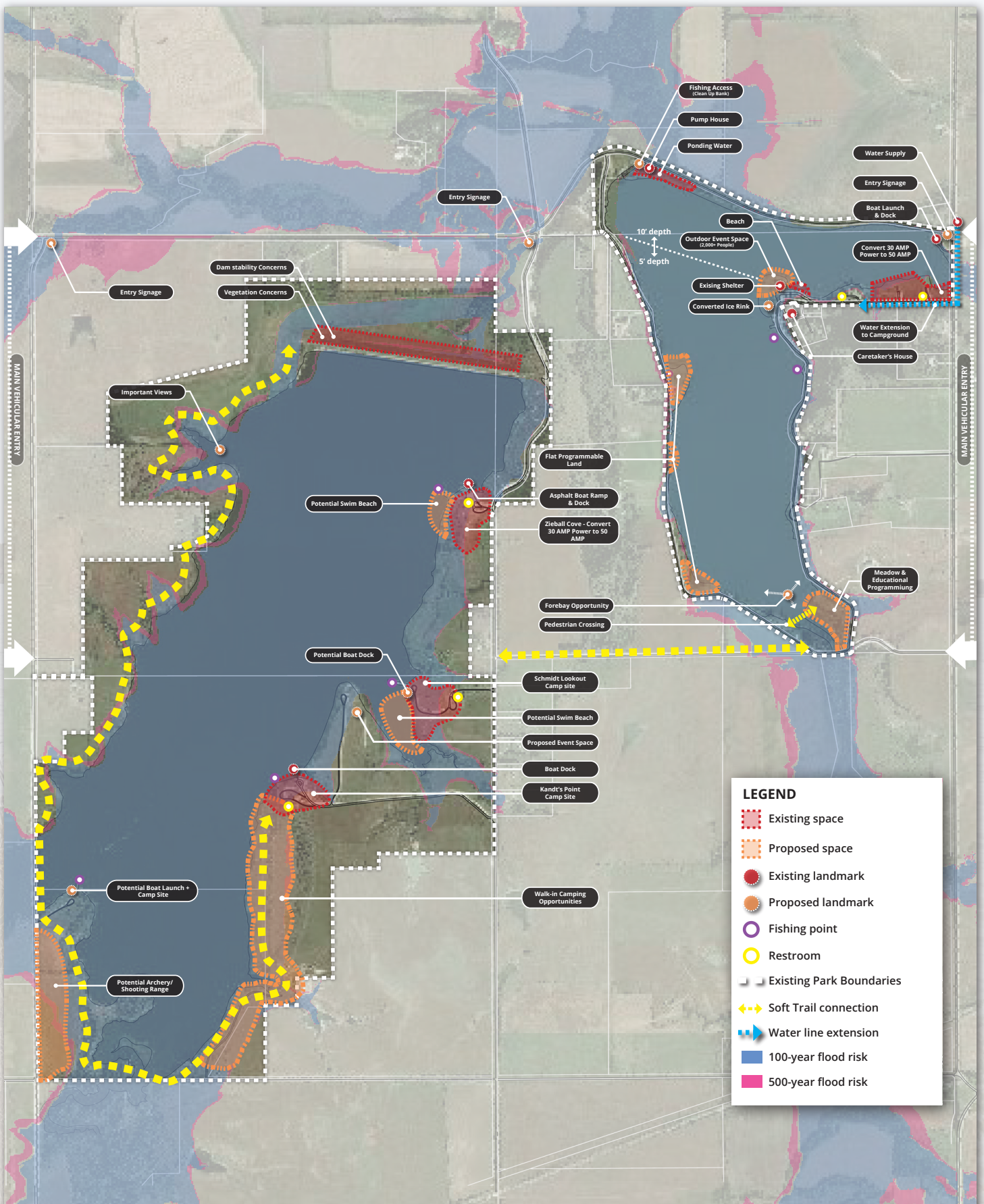


HERINGTON CITY PARK - HERINGTON KS



HERINGTON LAKE - HERINGTON KS





SITE ANALYSIS DIAGRAM



## Process

The design process began with the Design Team and Steering Committee members completing a “Walk the Park” analysis on November 3rd, 2021. This step in the master planning process allowed for both the Design Team and client group to gain an in-depth knowledge and understanding of the various aspects of the park sites. This also provided input to the Design Team regarding maintenance, operations, and programming of the current park facilities.

Following the site walk, the group gathered at Herington City Hall for continued discussion and a summary of the site walk. The group also participated in a ‘Dot Exercise’, where they prioritized the program elements, architectural aesthetic and signage character to guide development of the Herington Lakes Master Plan. The information gathered, along with research, extensive public input and information from the site inventory, was then used as a tool to guide the design recommendations for the master plan.



**WALK THE PARK**



**CITY COUNCIL & DESIGN TEAM CHARRETTE**



**SITE PHOTO AT 500 AVE AND TRAIL RD**



# Goal and Vision Statement

The next step in the design process was for the Design Team and City Staff to develop Goal and Vision Statements as a means to set a level of expectation for these important projects and to become the guiding principles for the project. Design options and recommendations were weighed against the Goal and Vision Statements as a means to validate their ability to meet the expectations set forth.

## GOAL:

To create a destination unique to the central Kansas region drawing a multi-generational population of Herington community residents and tourists for memorable and repeated visits while still preserving and sustaining the existing ecological character.



## VISION STATEMENTS:

1. Capitalize on partnerships with the local schools, county, community businesses and public-private partnerships to accelerate phasing opportunities and create a regional and economic draw.
2. Establish a sustainable and maintainable vision for the parks that create community buy-in and establish the park as a regional tourist destination.
3. Develop an aesthetic that is complementary to the existing park character to create a memorable and iconic experience for all users while incorporating experiences on and adjacent to the water.

## Benchmarking Analysis

The next step in the design process was to begin the process of "Understanding the Market." A "Comparative Analysis" of six similar facilities within the region was conducted to understand and identify facilities or programs to be considered in order for each park to become a unique regional destination which provides one of a kind recreational opportunities. Finding this "sweet spot" that incorporates amenities unseen throughout the other parks increases the regional draw of the parks for extended uses.

	Acres	Shelters	Plumbed Restroom Facilities	Water Recreation	Designated Fishing	Paved Trails	Playground	Soft Trails	Ball Diamonds	Multi-Purpose Fields	Sand Volleyball	Disc Golf	Marina/Filling Station	Outdoor Amphitheater	Tennis	Beach	Kayak/Canoe/Paddle Board Rental	Gardens/Meadows	Horseback Riding	Tent/RV Camping	Visitor/Nature/Activity Center	Cabins/Over Night Accommodations	Dog Park	Pool/Water Play Area	Off-Road Adventure Trails
# of Parks with Amenity	→	6	5	4	6	3	4	6	2	2	3	1	3	2	1	4	2	2	2	5	1	2	0	1	1
Kanopolis Lake	3,406	X	X	X	X	X	X	X	X			X	X	X		X	X	X	X	X	X				
Council Grove Lake	3,235	X	X	X	X	X	X	X		X	X		X	X	X	X	X			X				X	X
Lake Kahola	1,205	X		X	X			X					X					X				X			
Chase State Fishing Lake	802	X	X		X			X								X				X					
Harvey County East Park Lake	570	X	X	X	X	X	X	X			X								X	X					
Marion County Park	300	X	X	X	X	X	X	X		X	X					X	X			X					
Present Day Herington Lake(s)	1,560	X		X	X		X	X								X				X					

## BENCHMARK ANALYSIS



## Committee/Public Input Findings

On December 8, 2021, the Design Team gathered additional input through a public workshop at the Herington Community Building. This open house format gave participants the opportunity to provide their input regarding preferred amenities and programs for the parks. Additional feedback was gathered related to amenity location and surrounding context of the properties around the park. Participants were polled on preferences of program, architectural character, signage/wayfinding and public art. Results were utilized to develop a preferred program for the two initial concepts.

Following the input meeting with the public, additional feedback was solicited input from students at Herington High School. The additional responses were added to the public input to verify overall direction for program and amenities to be considered in the parks concept plans.

## Design Alternatives Review

Upon completion of the site review and various programming workshops, the Design Team developed two master plan alternatives for Herington Lakes. The plans were then presented at a workshop on March 1st, 2022. The public was invited to provide their thoughts regarding each of the proposed master plan alternatives and the facilities and programs each provided. Those attending the workshop were also encouraged to provide any additional thoughts and ideas via email.

Common facilities and program elements were found between plan alternatives based on the activities desired within the park. The results of the input gathered are shown below:

- Dog Park
- Water Overlooks and Fishing Pavilions
- Single Track Trails
- Disc Golf
- Cabins
- RV Camp Sites
- Tent Camp Sites
- Pavilions
- Beach Areas
- Year-Round Event Pavilions
- Archery/Paintball Courses
- Food Truck Plaza and Amphitheater



SWIM BEACH



ARCHERY



YEAR-ROUND EVENT PAVILION



POLE FISHING AREA

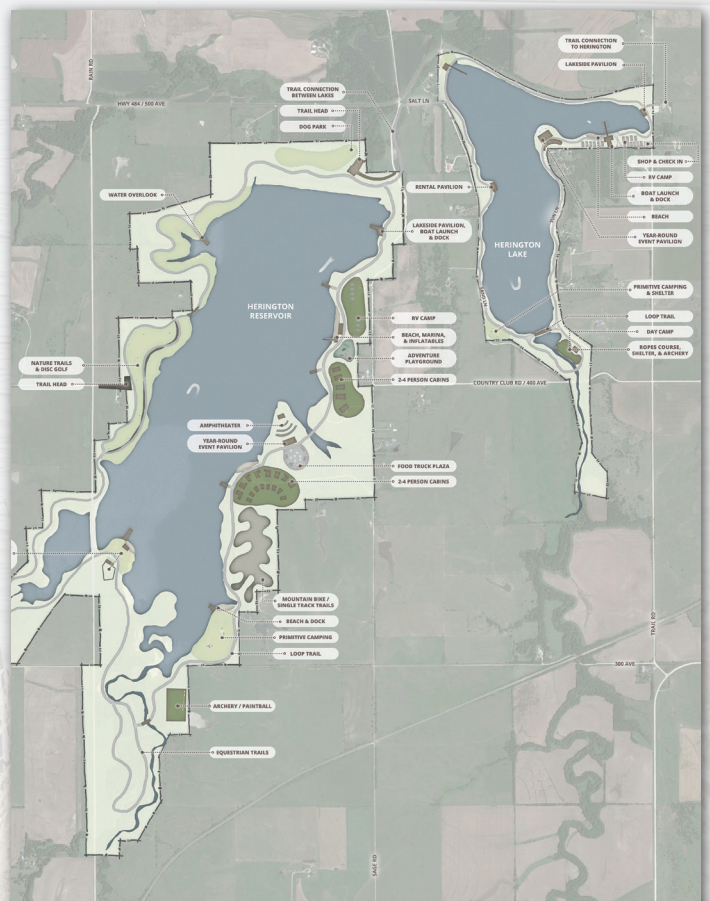
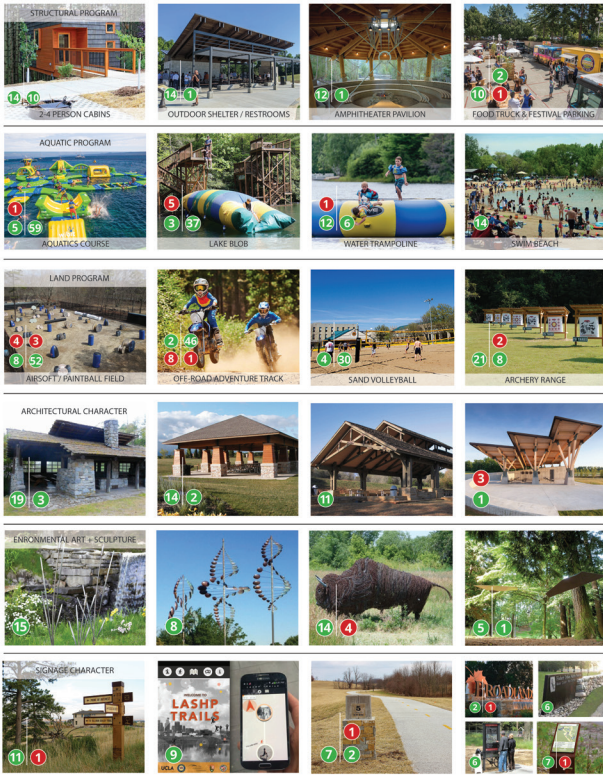


## Design Alternatives Review (Continued)

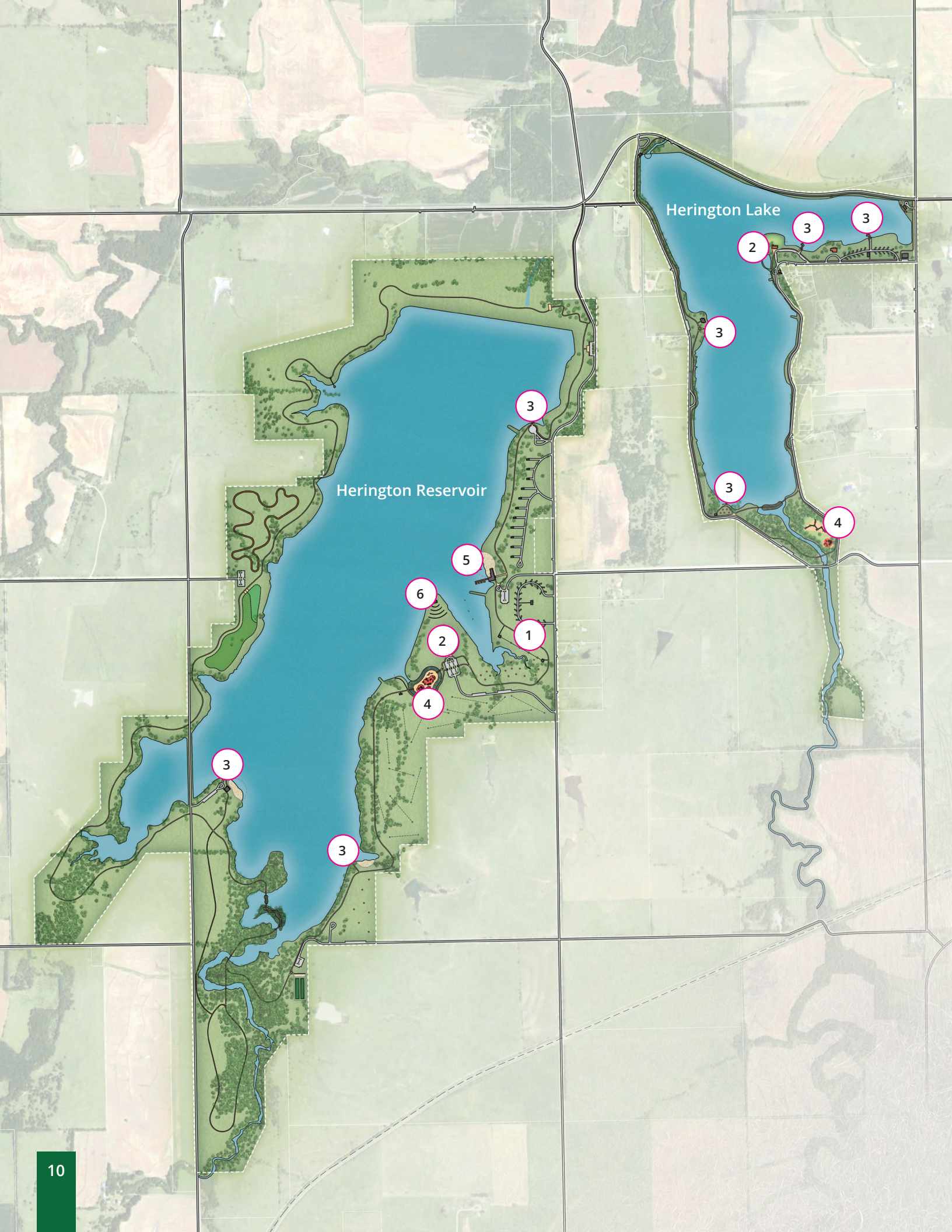
Amenities that were unique to each option included equestrian trails, destination playground and spray ground, a water feature, a zip line, ropes course and day camp. It was noted within the presentation that portions of each plan could be combined to form the final master plan.

The public was given an opportunity to provide additional feedback on the concepts. An overwhelming preference from participants was toward Option 1 was noted with a few elements and layout of Option 2 included in the final plan.

Following the public meeting, extensive coordination was completed between the Design Team, City Staff and Steering Committee members. Through meetings conducted over several months, City Staff and the Design Team responded to comments and questions raised about the final master plan. Refinements of Option 1 in the final master plan represent the Design Team response to meet the public's desires for the new facilities proposed in the master plan.







Herington Lake

Herington Reservoir





1 Zip Line

## Master Plan

The Master Plan for Herington Lakes embraces the rustic character of the sites and provides a variety of options for both daytime users as well as overnight experiences. The plan maximizes visitor interaction with the lake, allowing for fishing, boating, and nature exploration along the shoreline, which were identified as desired elements in the public input process. The Master Plan provides a wide variety of recreational facilities and programs for park users to experience within the rolling topography of the site. The plan includes a variety of amenities geared towards drop-in passive activities, small and large scale gatherings/events, and active recreational uses alike. The locations of the various features capitalize on the scenic rolling topography within the picturesque site. Key elements in the recommended master plan include:



2 YEAR-ROUND EVENT PAVILION



3 BOAT DOCK



4 PLAYGROUND SPACE

### Herington Lake

- Lakeside Pavilion/Fishing Boardwalk
- Check In Station/Shop
- RV Campsites
- Restrooms with Showers
- Year-Round Event Pavilion
- Trailhead Connection to Herington
- Primitive Camp Sites
- Forebay and Boardwalks
- Adventure Playground
- Ropes/Team Building Courses
- Boat and Fishing Docks
- Soft Loop Trail

### Herington Reservoir

- Trailhead Parking
- Boat Launch and Fishing Dock
- 2-3 Person Cabins
- Beach/Marina with Inflatable
- RV Camp Sites
- Zip Line
- Primitive Camp Sites
- Disc Golf Course
- Event Lawn and Food Truck Parking
- Year-Round Event Pavilion
- Amphitheater
- Destination Adventure Playground and Splash Pad
- Water Feature
- Archery and Paintball Range
- Equestrian Trails
- Equestrian Camping and Horse Corral
- Small and Large Dog Park
- Single Track Trails
- Forebay and Boardwalks
- Soft Loop Trail



5 BEACH MARINA



6 AMPHITHEATER



# Herington Lake







1 LAKESIDE PAVILION/FISHING



2 CHECK IN STATION/SHOP



3 RV CAMPSITE



4 RESTROOM WITH SHOWER



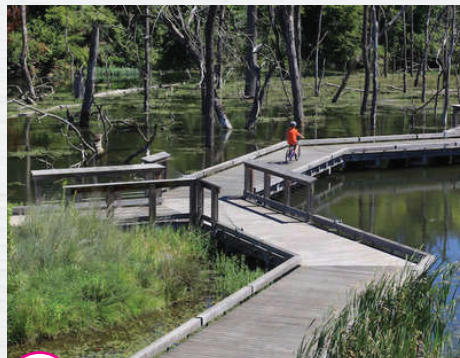
5 YEAR-ROUND EVENT PAVILION



6 TRAIL CONNECTION TO CITY



7 PRIMITIVE CAMPSITE



8 FOREBAY & BOARDWALK



9 ADVENTURE PLAYGROUND



10 TEAM BUILDING COURSE



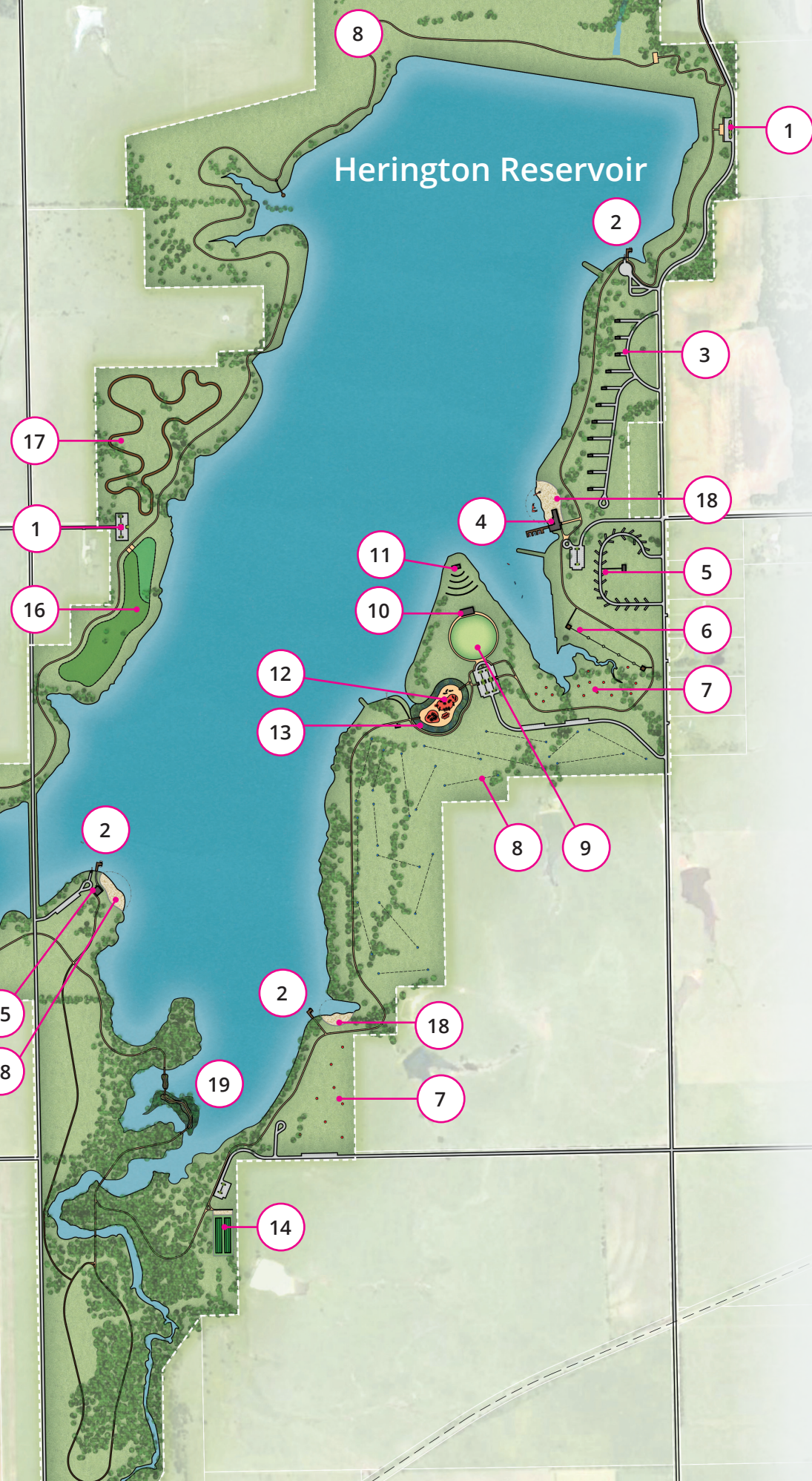
11 BOAT AND FISHING DOCK



12 SOFT LOOP TRAIL



# Herington Reservoir







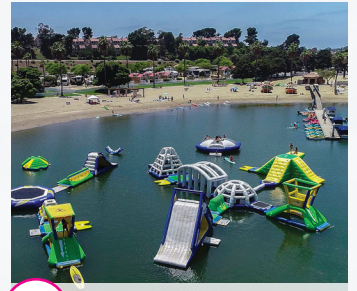
1 TRAILHEAD PARKING



2 LAUNCH/FISHING DOCK



3 2-3 PERSON CABINS



4 MARINA WITH INFLATABLES



5 RV CAMPSITE



6 ZIP LINE



7 PRIMITIVE CAMP SITE



8 DISC GOLF COURSE



9 LAWN & FOOD TRUCK PLAZA



10 YEAR-ROUND PAVILION



11 AMPHITHEATER



12 DESTINATION PLAYGROUND



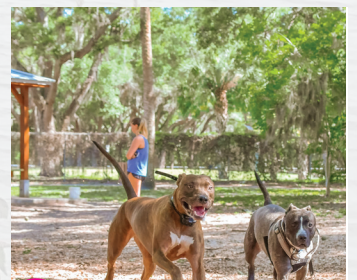
13 WATER FEATURE



14 ARCHERY AND PAINTBALL



15 HORSE CORRAL



16 SMALL & LARGE DOG PARK



17 SINGLE TRACK TRAILS



18 SWIM BEACH



19 FOREBAY & BOARDWALK



20 SOFT LOOP TRAIL



## Project Capital/Funding

It is anticipated that funding for these projects will be phased over multiple years. Initial Phase I improvements and funding sources for the planned amenities are still being determined. Multiple sources are anticipated; including public-private partnerships, grant opportunities, and possible bonding. The final budget for enhancements may vary from phase to phase depending on the overall scope of construction and the recommended aesthetic enhancements as outlined in this master plan.



SHELTER HOUSE EVENT SPACE AND OPEN LAWN



AMPHITHEATER AND YEAR-ROUND EVENT LAWN WITH FOOD TRUCK PARKING



## Summary

The completed Master Plan for the Herington Lakes will establish a new beginning point for these remarkable public amenities. Due to the strong vision and leadership provided by the Herington City Council and City Staff coupled with the thoughtful input of the residents of Herington, the resurgence of these incredible public assets has begun. Through creative design and careful implementation, the completed facilities will provide the City of Herington and the Central Kansas region with extraordinary park experiences and recreational programs to benefit countless park users. The deliberate connection between natural environments and diverse programming will create a destination unique to the area that draws repeated visits from a multi-generational population while still preserving wildlife habitat. These facilities will be awe-inspiring and memorable destinations for Herington residents and visitors for years to come..



DESTINATION PLAYGROUND AND EVENT LAWN



RV CAMPSITE, BATHHOUSE, AND BOAT LAUNCH/DOCK



HERINGTON LAKE OVERVIEW AND FISHING PAVILION